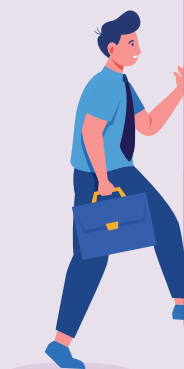




# Électrification Paris-Troyes

Phase 2 - de Nogent-sur-Seine à Troyes

PASSENGER  
GUIDE



From 30 June to 31 August 2025

**This summer, coaches are  
replacing trains between  
Troyes and Nogent-sur-Seine.**



# Électrification Paris-Troyes

Phase 2 - de Nogent-sur-Seine à Troyes

## A new step towards modernising your line.

After an initial phase completed in 2022 between Gretz and Nogent-sur-Seine, electrification of the line has been ongoing between Nogent-sur-Seine and Troyes since 2024. A project eagerly awaited by the whole of the "Région Grand Est".

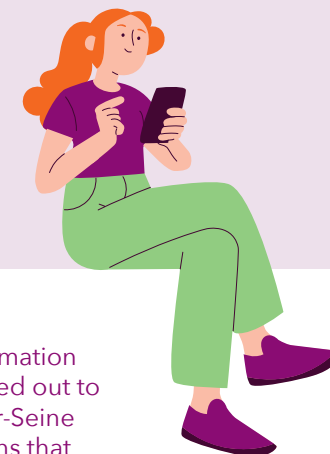
All those involved in the project are fully committed to ensuring that the electrified line is brought into service by summer 2028, while maintaining continuity of service during the summer closures of the line in 2025, 2026 and 2027.

## ► Word from the project partners: a major milestone for our regions.

“ With the launch of the 2<sup>nd</sup> phase of electrification, the whole of the south of the "Région Grand Est" is opening up to new prospects.

Our efforts, and those of all the local authorities and partner institutions, will soon bear fruit in the form of a better quality of service. Convinced of the need for the project and of its many benefits, we have invested substantial resources in it to bring it to fruition as quickly as possible.

By summer 2028, residents and all local players will be able to benefit from a train that is more reliable, safer and more respectful of the environment, which will enhance the quality of life and attractiveness of the Grand Est region. As a result, our region is continuing to grow, driven by an ever-increasing range of mobility options.



## Contents

In this guide you will find all the information you need about the work being carried out to electrify the line between Nogent-sur-Seine and Troyes, and the transport solutions that have been put in place to help you travel with peace of mind this summer.

**Work already completed** ..... 04

**Line closure over the summer** ..... 05

**Alternative transport service** ..... 06

**Journey times in July and August** ..... 07

### Routes by departure and arrival points:

► Between Nogent-sur-Seine and Paris ..... 09

► Between Romilly-sur-Seine and Paris ..... 10

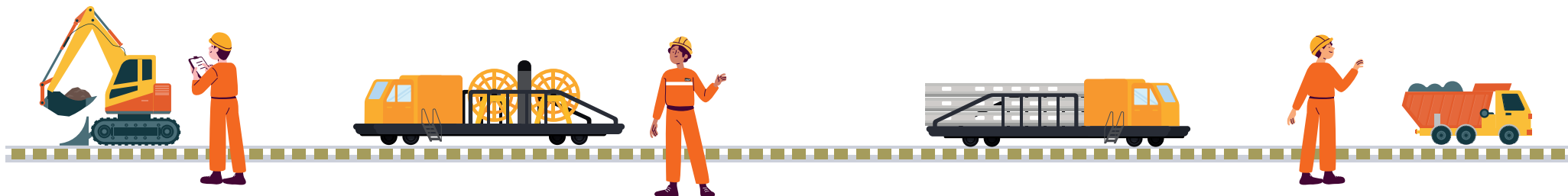
► Between Troyes and Paris ..... 11

► Between Chaumont and Paris ..... 12

► Beyond Chaumont and as far as Paris ..... 13

**The transport service in practice** ..... 14

**Alternative transport timetables (coaches and trains)** ..... 15



## Electrification of the line: great benefits for tomorrow!

From 2028, the electrified line will offer you a high quality of service with safer, more reliable daily journeys.

By significantly reducing greenhouse gas emissions - by up to 7,000 tonnes of CO<sub>2</sub> per year - it will help to improve air quality. Quieter, this new line will also promote a better quality of life, enhanced by the development of facilities for soft mobility. Lastly, it will boost the local economy and tourism by facilitating access to the area and enhancing its appeal.

### Electrifying the line is a major project:

- Electrification of 119 km of track.
- Modernisation of the line's facilities.
- Adapting the height of 30 bridges and footbridges along the route to allow installation of the catenary equipment needed to power the trains. Raising, demolishing and rebuilding: this is the biggest engineering works project in the Grand Est region this decade!

### More than a building site, a technical feat!



- **30 engineering structures** including 13 to be upgraded or rebuilt by 2025.



- **119 km** of track to be electrified.



- **2,300 overhead line poles** and **500 km** of cables to be installed.



- **150 km of signalling** to be replaced.

- **1 substation** to be built.

## A line closure is necessary in summer.

To limit the impact of this work on daily trains, teams are working at night. To speed up progress, work will also be carried out during the day in the summers of 2025, 2026 and 2027, as well as over certain weekends. This organisation, defined in consultation with the regions and users, will enable the electrified line to be brought into service at the end of summer 2028.

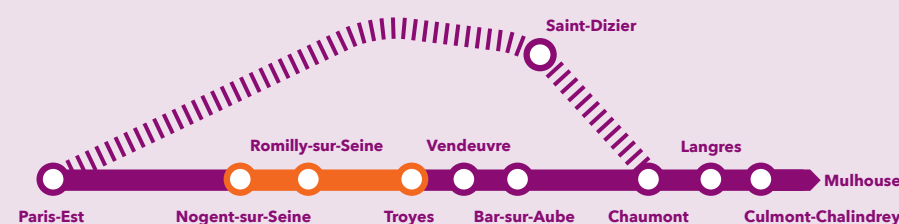
**During these periods, the line will be closed between Troyes and Nogent-sur-Seine, but continuity of service will be ensured with:**

- The introduction of coaches between Troyes, Romilly-sur-Seine and Nogent-sur-Seine.
- Maintaining trains between Nogent-sur-Seine and Paris-Est.
- The Paris-Mulhouse trains diverted via Saint-Dizier.

### Summer 2025, 2026, 2027:

- Coaches Nogent-sur-Seine <-> Troyes
- Paris - Mulhouse trains diverted via Saint-Dizier

- Train
- Coach
- ||| Paris - Mulhouse trains diverted via Saint-Dizier



# This summer, coaches are replacing trains between Troyes and Nogent-sur-Seine.

The Grand Est Region and SNCF Voyageurs are working together to offer you a transport service during the works.

**From Monday 30 June to Sunday 31 August 2025**

buses will be running between Troyes, Romilly-sur-Seine and Nogent-sur-Seine.

## ► During the week, an adapted transport plan is in place with:

- **12.5 return trips between Paris and Nogent-sur-Seine** (compared with the usual 17.5 round trips).
- **9.5 return trips between Troyes and Culmont-Chalindrey.**



- **Long-distance service Paris-Est<>Belfort-Mulhouse** maintained without connection:  
**4.5 Paris/Belfort round trips, including 3 that continue to Mulhouse.**

## ► Weekends:



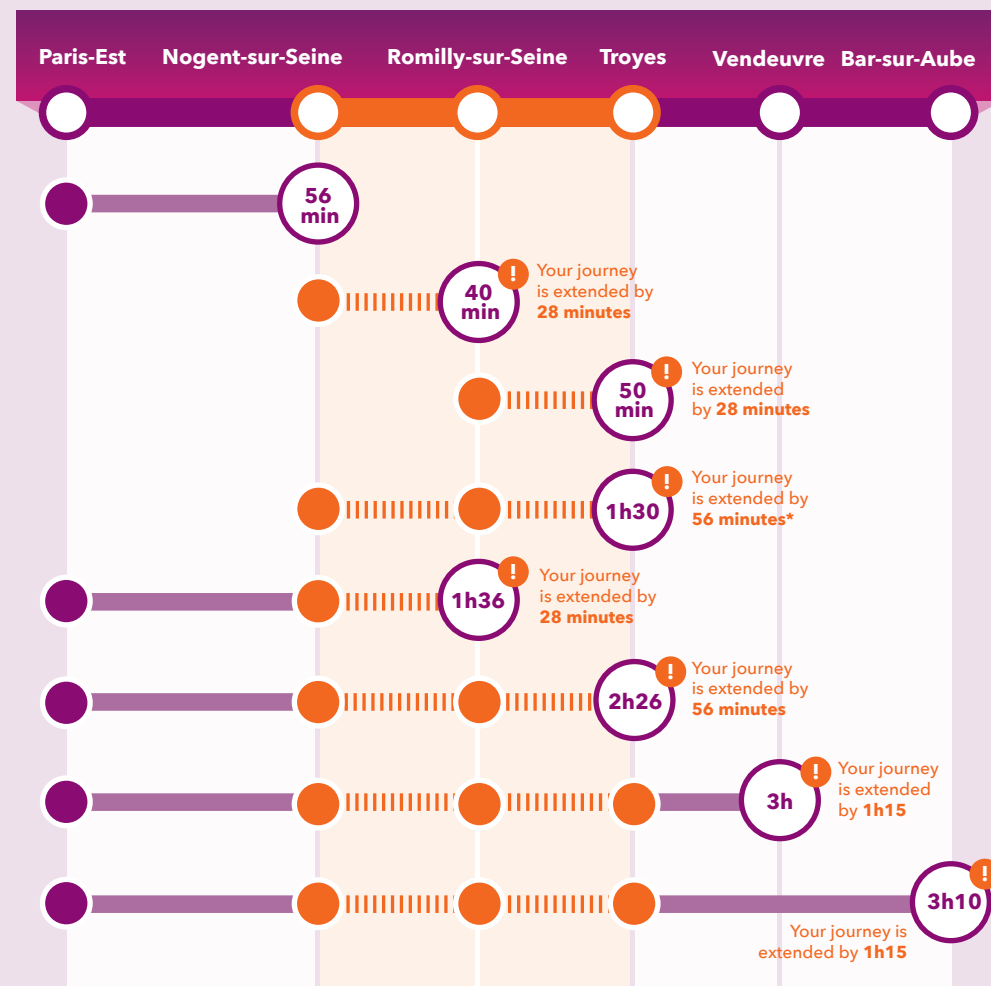
- **70% of this transport plan is implemented.**



# Plan your journey ahead!

Adapting your journeys between Troyes and Nogent-sur-Seine will have an impact on their duration, so remember to prepare them in advance.

## ► The impact on your journey time



\* In the case of a direct coach between Nogent-sur-Seine and Troyes, the journey time is 1 hour 20 minutes, i.e. 46 minutes longer than your usual journey time outside the construction period.

# FIND

all the information you need to get around with peace of mind this summer!



## Do you want to travel between Nogent-sur-Seine and Paris?



**The line remains open between Nogent-sur-Seine and Paris.**

Rail traffic will continue in both directions, albeit with reduced frequency.

**The concourse at Nogent-sur-Seine station will be open:**

Mondays from 5am to 1.45pm, Tuesdays to Fridays from 5am to 5pm.

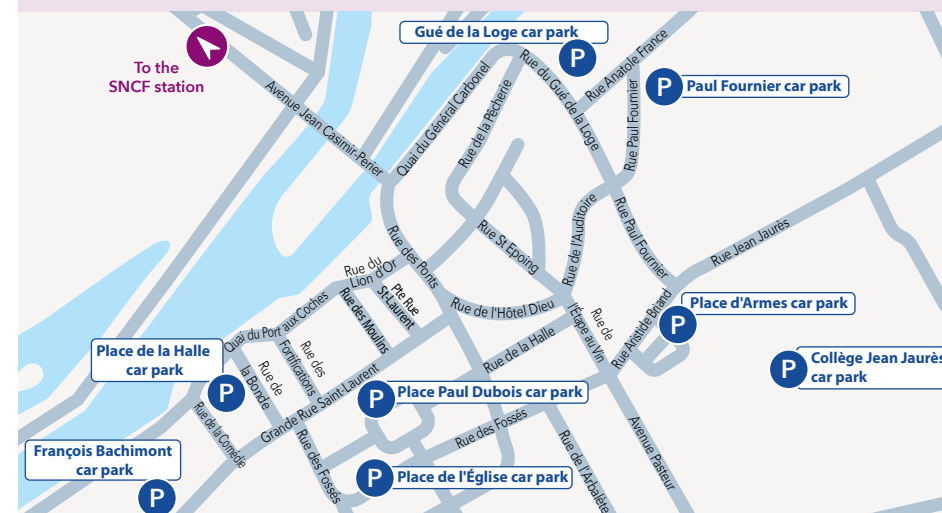
Saturdays, Sundays and public holidays: closed.

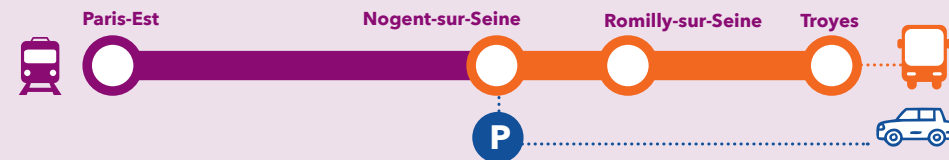
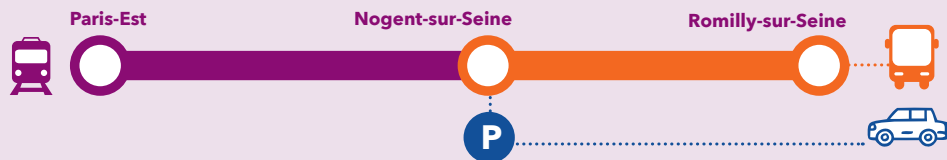
### Nogent-sur-Seine car parks



**If you're arriving in Nogent-sur-Seine by car, there are 8 car parks, in addition to the one near the station, where you can park and walk to the station in less than 15 minutes.**

Gué de la Loge, Place Paul Dubois, Paul Fournier, Collège Jean Jaurès, Place d'Armes, Place de la Halle, François Bachimont and Place de l'Église.





## Do you want to travel between Romilly-sur-Seine and Paris?

### ➔ From Romilly-sur-Seine to Paris

#### ► **SOLUTION 1: COACH + TRAIN** (journey times on page 7)

Take the coach between Romilly-sur-Seine and Nogent-sur-Seine, then continue by train to Paris.

#### ► **SOLUTION 2: CAR + TRAIN**

Drive to Nogent-sur-Seine, then take the train to Paris.

Find out all you need to know about parking in Nogent-sur-Seine on page 9.

Car-sharing solutions are available, so think about it!

### ➔ From Paris to Romilly-sur-Seine

Same organisation as Romilly-sur-Seine > Paris

The Romilly-sur-Seine station concourse will be open every day:

Mondays from 5.15am to 1.45pm. Tuesday to Sunday and public holidays from 5.15am to 5pm.

#### Romilly-sur-Seine coach



#### Nogent-sur-Seine coach



## Do you want to travel between Troyes and Paris?

### ➔ From Troyes to Paris

#### ► **SOLUTION 1: COACH + TRAIN** (journey times on page 7)

Take the coach between Troyes and Nogent-sur-Seine (direct or with a stop at Romilly-sur-Seine) then continue by train to Paris.

#### ► **SOLUTION 2: CAR + TRAIN**

Drive to Nogent-sur-Seine, then take the train to Paris.

Find out all you need to know about parking in Nogent-sur-Seine on page 9.

Car-sharing solutions are available, so think about it!

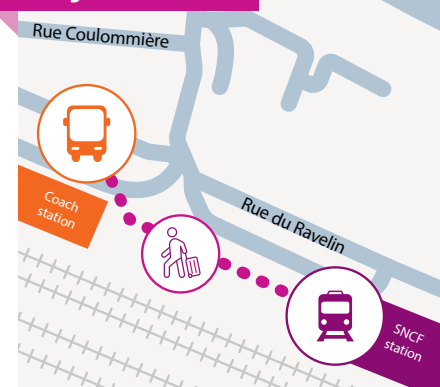
### ➔ From Paris to Troyes

Same organisation as in the direction Troyes > Paris

The Troyes station concourse will be open every day:

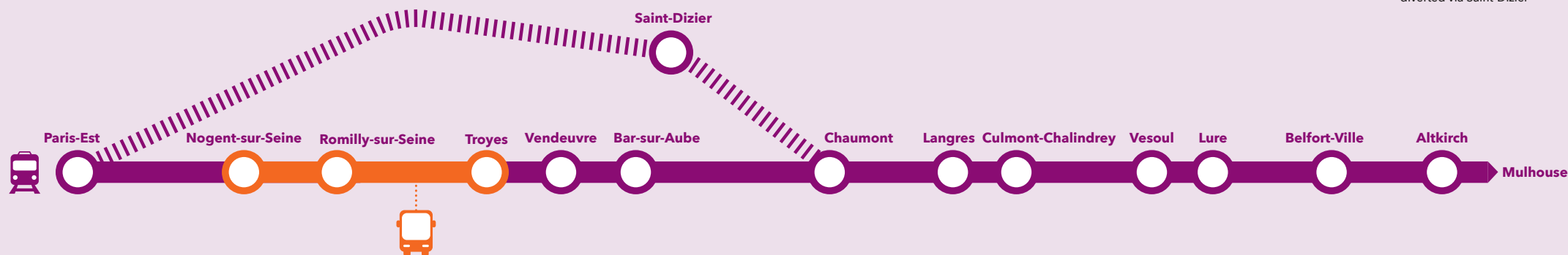
Monday to Saturday, 4.45am to midnight. Sundays and public holidays from 7.30am to midnight.

#### Troyes coach



#### Nogent-sur-Seine coach





## Do you want to travel between Chaumont and Paris?

### ↔ Vendeuvre and Bar-sur-Aube <> Paris

- **FROM VENDEUVRE AND BAR-SUR-AUBE** (journey times on page 7):  
Take the train to Troyes, change to the Troyes - Nogent-sur-Seine coach (direct or with a stop at Romilly-sur-Seine), then take the train back to Paris.
- **FROM PARIS:** same organisation as for Vendeuvre and Bar-sur-Aube > Paris.

### ↔ Chaumont <> Paris

- **DE CHAUMONT:**
  - **Solution 1: Train diverted via Saint-Dizier**  
(additional journey times are to be expected)  
Take the Paris-Est<>Mulhouse line via Saint-Dizier.
  - **Solution 2: coach + train**  
(additional journey times are to be expected)  
Take the train to Troyes, change to the Troyes - Nogent-sur-Seine coach (direct or with a stop at Romilly-sur-Seine), then take the train back to Paris.
- **FROM PARIS:** same organisation as in the Chaumont > Paris direction.

## Do you want to travel from beyond Chaumont as far as Paris?

### ↔ Belfort-Mulhouse <> Paris

- **FROM BELFORT-MULHOUSE**  
(additional journey times are to be expected):  
Take the Paris-Est<>Mulhouse line via Saint-Dizier.
- **FROM PARIS:** same organisation as in the Belfort-Mulhouse > Paris direction.



To find out where to catch the replacement coaches in Troyes, Romilly-sur-Seine and Nogent-sur-Seine, see pages 10-11.



# WITH YOU ALL SUMMER

SNCF Voyageurs teams will be on hand during the closure period to help you with your journeys.

► **From 1 to 14 July:**

- Dedicated staff at Nogent-sur-Seine station will answer your questions and help you find your way.
  - A dispatcher will be present at the Troyes and Nogent-sur-Seine sites to ensure that the coach service runs smoothly.
- Optimised management of connections between coaches and trains.
- Real-time information on SNCF Connect, TER Grand Est or any other mobility application of your choice.

## The transport service in practice:

► **To use the coaches and trains**

during this period, **you must make a reservation on the TER Grand Est website,**



even if you are a season ticket holder.

► **On the coaches:**

- No tickets will be sold on board.
- Bicycles cannot be taken on board.
- Travelling with a child will be subject to the same rules as on trains.
- Travelling with an animal will be subject to the same rules as on trains.

► **For people with disabilities**

a taxi service will be available from Nogent-sur-Seine, Romilly-sur-Seine and Troyes to Châlons-en-Champagne, before taking a train to Paris. This service is available in both directions.

**Bookings can be made on the Assist'enGare website**



# DOWNLOAD ALL TIMETABLES



**Paris-Est <> Troyes <> Mulhouse**



# STAY INFORMED THIS SUMMER.

All the practical information  
you need to plan your  
journeys.



## Timetables, routes and mobility solutions

### ► Alternative transport:

Consult the coach and train timetables for the works  
and book your journey on:

- [ter.sncf.com/grand-est](https://ter.sncf.com/grand-est)
- [sncf-connect.com](https://sncf-connect.com)
- Or via any other mobile application of your choice



### ► Other mobility solutions:

- Carpool with Karos! For all your day-to-day journeys, use the Karos application, supported by Troyes Champagne Métropole, the "Département de l'Aube" and the "Fonds vert". A financially advantageous solution for users!
- Calculate the best route for your journey using the Appli Fluo Grand Est or [fluو.grandest.fr](https://fluو.grandest.fr)

## All the information about the work on the line

### ► Stay informed in real time at every stage of your journey:

✕ @TERGrdEstParis

### ► All the information on the site dedicated to the works:

